

Owner's Manual

ST101

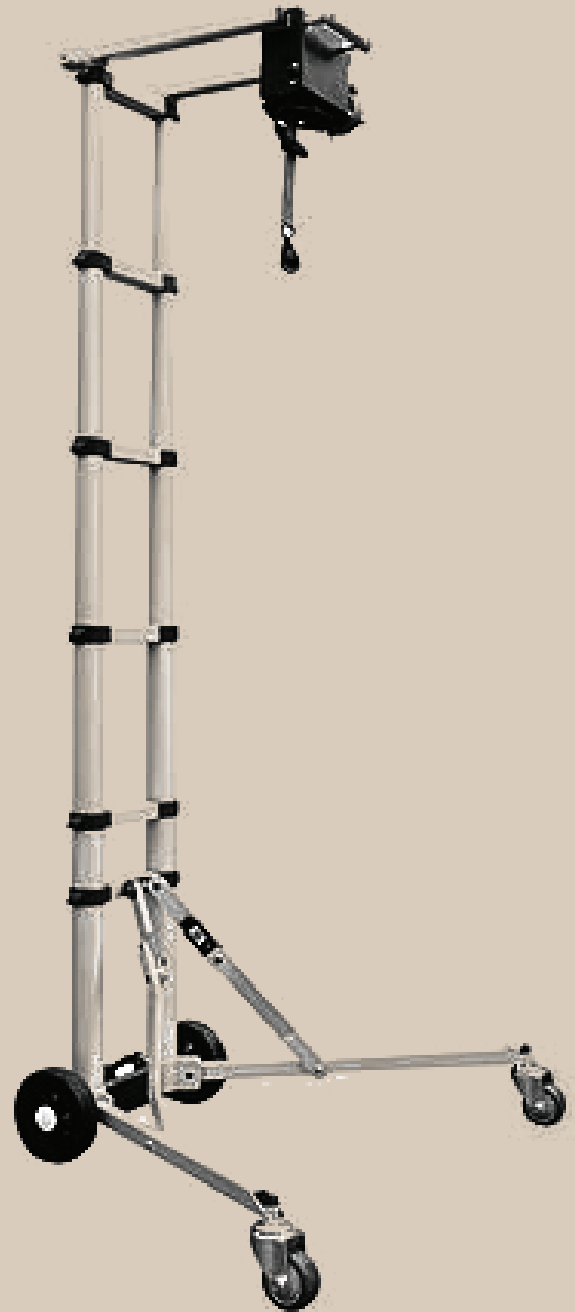


TABLE OF CONTENT

1.0	Introduction	3
2.0	Summary.....	3
3.0	Specification.....	4
4.0	Assembly	4
5.0	Weight Capacity.....	6
6.0	Power Connections.....	6
7.0	Control switch.....	7
8.0	Height Adjustment.....	7
9.0	Wheel Brake	9
10.0	Dis-Assembly.....	9

1.0 Introduction

The foldable telescopic hoist is a new advanced product which is driven by small motor and a telescopic ladder type main frame. It is suitable to lift the Solax folding scooters as well as the Motobility E-Traveller range.

It is good for family use because of easy to carry, effort saving, very flexible, small size (70 x 40 x 23 cm) and light weight (≤ 10 kgs).

2.0 Summary

Fig 1. Folded

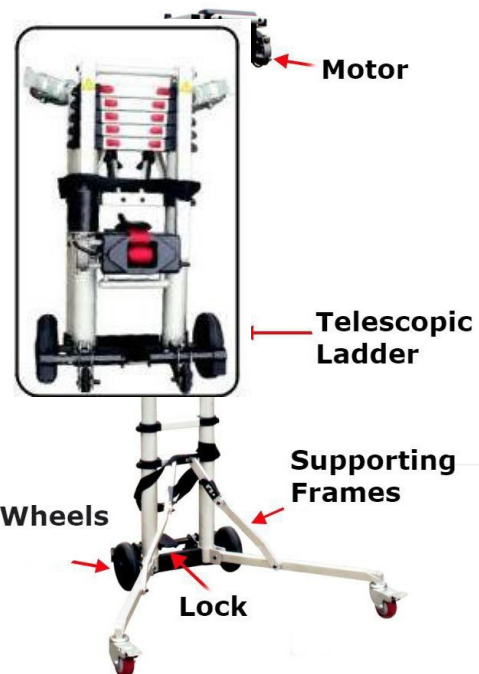


Fig 2. Unfolded



Easy to fold and unfold.

Folded dimension is at 70 x 40 x 23 cm, please refer to Fig 1.

Unfolded dimension is at 1780 x 85 x 70 cm, please refer to Fig 2.

It is merely four components in a unit.

3.0 Specification

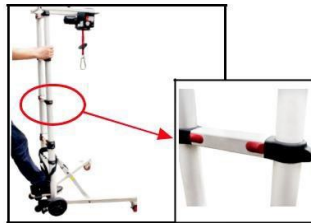
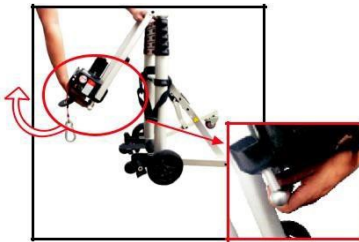
<i>Specification - MobiHoist MK12Y</i>	
Dimension (max)	1780x85x70cm
Dimension (folded)	70x40x23 cm
Load Capacity	30kg
Lift height	1.5m
Weight	10kg
Motor	DC 24V

4.0 Assembly

Caution

- Make sure the Hoist is sitting on a level and even ground to avoid any accident
- Make sure the Hoist is sitting balanced on the ground before extending the ladder
- Only lift items that are below 30kg and are balanced
- Cautions should be made when extending the ladder

1. Release the button on the side
2. Extend the supporting frames so that the wheels and castor are on the ground
3. When the hoist is in balance, sitting squarely on the ground,
4. Release the lock on the back of the motor, flip the motor in place
5. Extend the ladder step a time until fully extend



It is necessary to make sure full extent of each level of ladder. Check the push button is at correct position, always check if the outer edge of push button is overlapping).

5.0 Weight Capacity

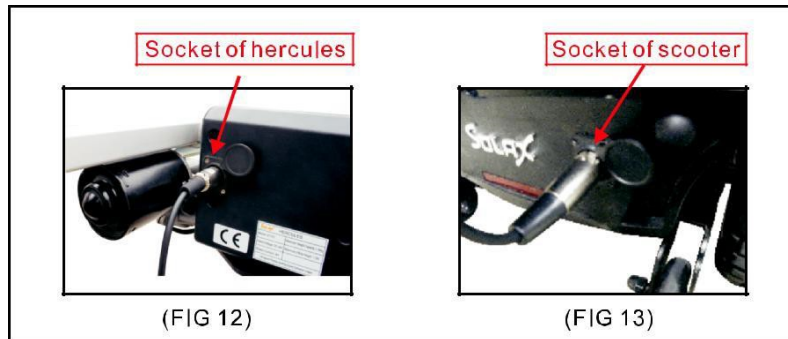
Caution

- Make sure the weight of the load is less than 30 kg
- Never overload the Hoist as it will damage the motor and make it unsafe to operate

Identify real weight of loading object and height to lift before use the Hoist

6.0 Power Connections

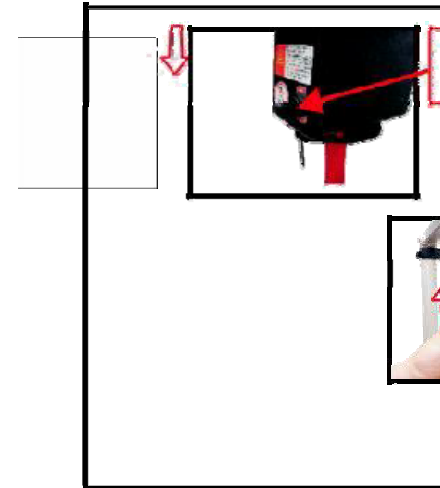
1. Please uncoil all the strap so that it will not pose any danger when operating Hoist
2. Connect the male XLR Cannon plug in to the bulkhead socket on control box of the Hoist
3. Connect the other end of the cable with the male XLR Cannon plug in to the bulkhead socket on Joystick controller on the Mobility TEK
4. Power connection is complete when both plugs are fully engaged in to their respective receptacles



7.0 Control switch

Lift up by pushing the switch up (Fig. 15)

Lower down by pushing switch down (fig. 16)



8.0 Height Adjustment

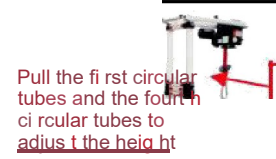
To adjust the height of Hoist, pull out all circular tubes fully (fig. 17), pull out one or a few sections of circular tube fully (fig. 21). Alternatively pull out fully several sections of circular tubes too meet your demanded height (fig 19, fig 20).



(FIG17)



(FIG 18)



(FIG 19)



(FIG 20)



(FIG 21)



(FIG 22)



(FIG 23)

9.0 Wheel Brake

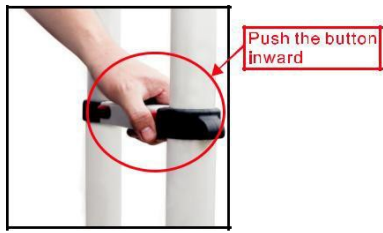
Press down pedal for braking and lift up pedal to release it. (See fig-22)

10.0 Dis-Assembly

Press push buttons inward for folding tubes of each section and then fold frame support as well (fig 26).

Caution

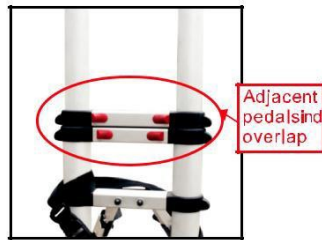
- Do not keep fingers between pedals or on joints of support frame while folding the hoist.
- Make sure bush button to the right position and do not fold tubes with too much strength in order to protect positional holes from damage.



(FIG 24)



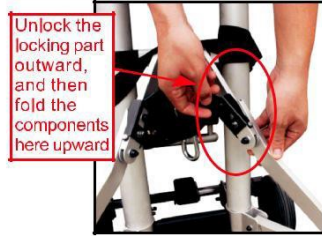
(FIG 25)



(FIG 26)



(FIG 27)



(FIG 28)